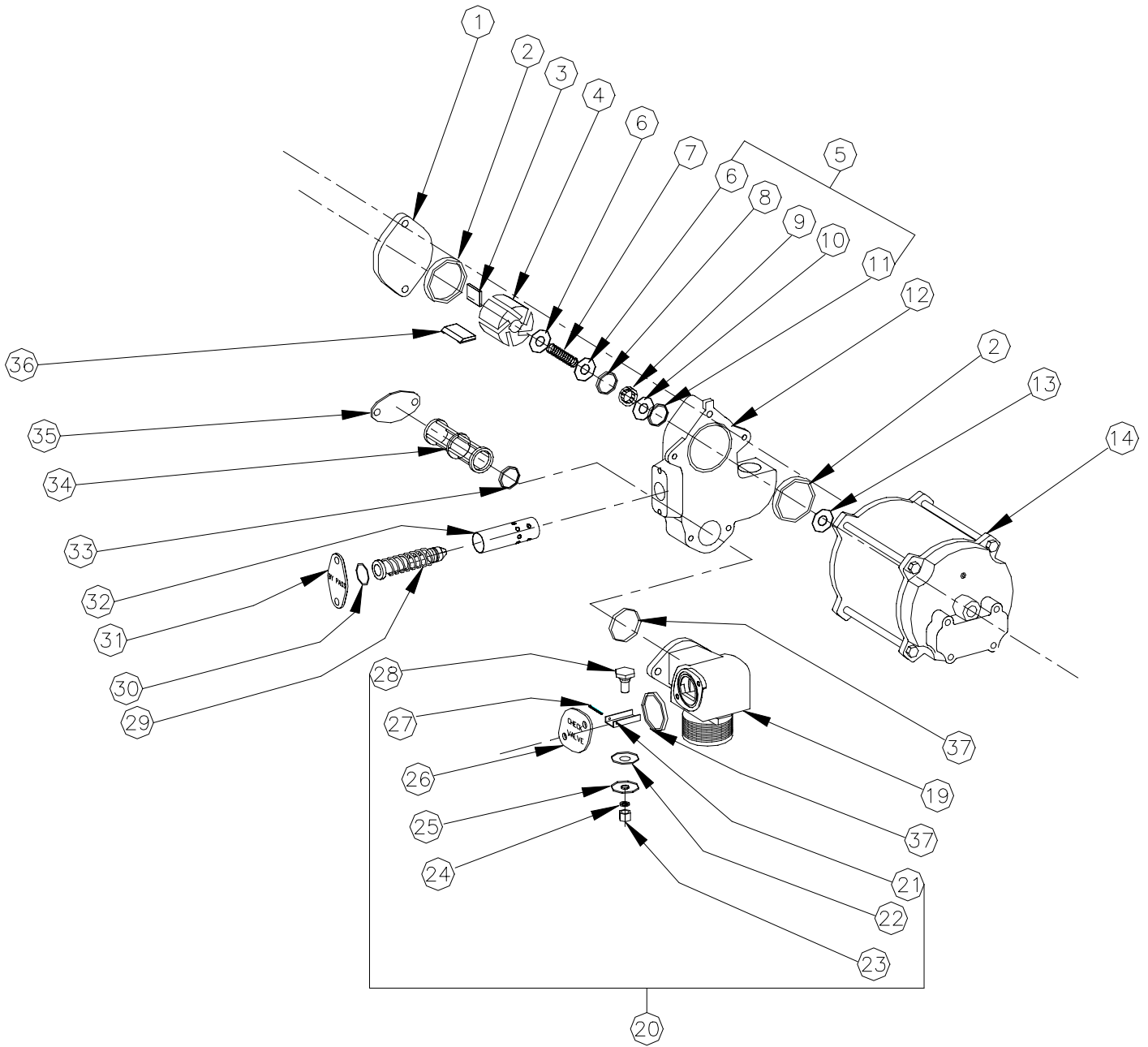


### DIRECT DRIVE MOTOR-PUMP ASSEMBLY



**DIRECT DRIVE MOTOR-PUMP ASSEMBLY**

Item	Part No.	Description
1	003490	Pump Cover
2	049004	Square-Ring
3	031285	Key, 70
4	051475	Rotor
5	054024	Seal Group (Consists of items 6-11)
6	067210	Washer
7	057956	Spring
8	048941	O-Ring
9	049510	Rotating Seal Ring
10	048820	Floating Seal Ring-Carbon
11	048956	O-Ring
12	003210	Pump Block
13	049525	Slinger Ring
14	F37332	Motor, 115V, 60 cycle, 70
	F37697	Motor, 115V, 60 cycle, 1800
	F37616	Motor, 230V, 50 cycle, 70
	F37461	Motor, 230V, 50 cycle, 1800
19	003065	Base
20	066655	Check Valve Assembly (Consists of items 21-25 & 28)
21	029155	Valve Guide
	029005	Valve Guide, 1800R
22	068680	Washer
23	038980	Hex Jam Nut
24	068650	Washer
25	024356	Valve Disc
26	022271	Check Valve Cover Assy.
27	042370	Cotter Pin
28	062620	Valve Stem w/Relief Valve
	*062365	Relief Valve
29	062335	By-Pass Stem Assy.
30	049001	Square Ring
31	022315	By-Pass Cover
32	065725	Tube
33	049002	Square-Ring
34	063268	Strainer, 100 Mesh, Gasoline
	063266	Strainer, 30 mesh, Diesel
35	022900	Strainer Cover
36	067030	Vane
37	049003	Square-Ring